



Commercial Quiet Diesel 10,000 GenSet

**Diesel
10 kW 60 Hz**



Commercial GenSet

- Dramatically Lower Noise, Vibration, Harshness (NVH)
- Significantly Quieter Than Conventional Diesel Generators
- Enclosed Muffler for Added Quietness, Easy Installation
- Automatic Glow Plug Eliminates Preheat Time Uncertainty
- Convenient, Top-Mounted Switches and Coolant Level Check/Fills
- Service and Maintenance Points Accessible Through Easy-Latch Side Service Door
- Self-Diagnostic Capability Simplifies Troubleshooting
- Complete, Integrated Package for Easy, Low-Cost Installation

Models and Ratings

<u>Model</u>	<u>Fan</u>	<u>Hz</u>	<u>Watts</u>	<u>Voltage</u>	<u>Amps</u>	<u>PF</u>	<u>Phase</u>	<u>Circuit Breaker</u>
10.0 HDCAC/42345	Internal	60	10,000	120/240	83.3/41.7	1.0	1	(1) 2 pole 45 A

All 60 Hz models operate at 1800 r/min.

Ratings apply to altitudes up to 500 ft (153 m), 104° F (40° C) ambient with No. 2 diesel fuel.

Derating: Power output will decrease 3.5% for each 1000 ft (305 m) above 500 ft (153 m) and 1% for each 10° F (5.5° C) increase in ambient temperature above 85° F (29° C).

Weight, Size and Sound Level

- 660 lb, wet
- Length 41.5 in (1053.6 mm), Width 24.5 in (621.1 mm), Height 27 in (685.8 mm)
- 68 dB(A) at 10 ft (3 m) before installation, full load

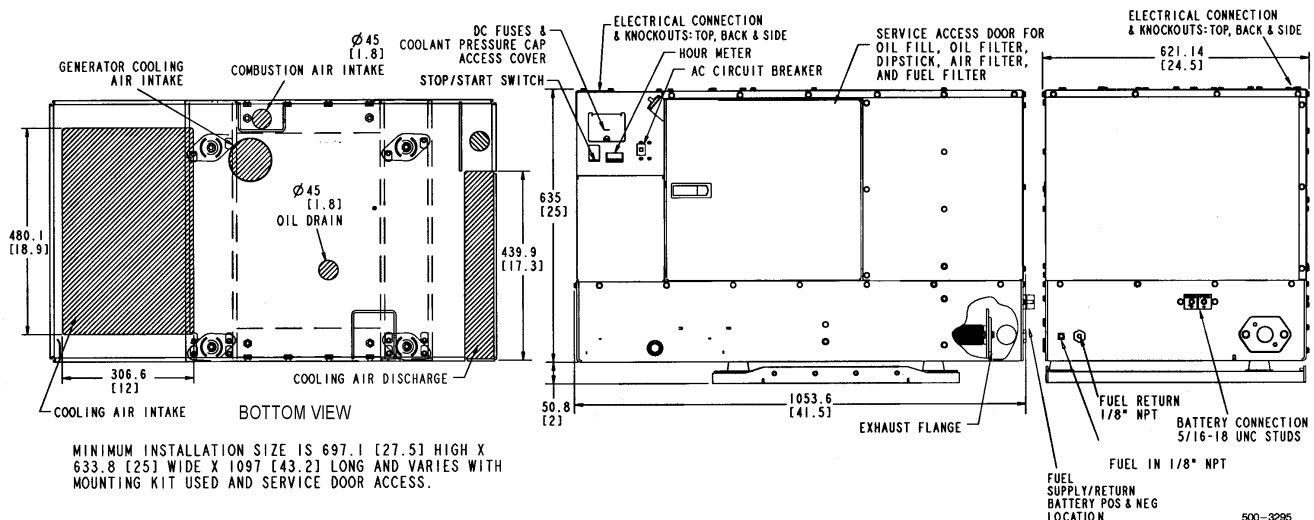
Standard Features

- 3 cylinder diesel engine
- Brush type AC alternator
- Digital voltage regulation with no adjustments required
- Bottom air inlet and outlet configuration
- Integral enclosed muffler with stationary exhaust pipe connection point
- USDA approved spark arrestor
- Internal radiator
- Sound insulated cover with cooling air inlet and outlet ducts
- Intake silencer
- Heavy duty air cleaner
- Maintenance free electronic governor
- Fused DC circuits
- Automotive type starter
- Regulated-voltage 20 A battery charging
- Hourmeter
- Waterproof connector for remote operation
- Focalized mounting system with 3-point vibration isolation
- Overvoltage, low oil pressure, overtemp, overspeed and overload safeties
- Bulkhead type connections for fuel and battery
- Terminal block connection for AC output
- Electric fuel pump
- Fuel filter
- Full flow oil filter
- Service and maintenance from below or side service access panel
- Automatic timed glow plugs for quick easy start
- Instant one touch stop
- Sealed circuit breaker

Accessories

- Exhaust elbow, 90° (part #155-3194)
- Exhaust adapter, 3-inch (part #155-2610), 7-inch (part #155-2424)
- Remote control pigtail (part #300-4947)
- Remote control harness pigtail at panel (part #338-3573)
- Remote control panel, switch only (part #300-4942)
- Remote control panel, switch and hourmeter (part #300-4943)
- Remote control panel, switch and DC voltmeter (part #300-4944)
- Remote gauge panel, switch, DC voltmeter, water temperature gauge, oil pressure switch and hourmeter (part #300-5218 Spec A, 300-5027 Spec B and later)
- Battery 12 V, 660 cold cranking amps at 0° F (-17.8° C) (wet) (part #416-0796)
- Battery 12 V, 620 cold cranking amps at 0° F (-17.8° C) (dry) (part #416-0823)
- Remote harness (for use with remote panels), 10 ft (part #338-3490-01), 30 ft (part #338-3490-02)
- Secondary vibration isolation kit (part #402-0752)

Basic Dimensions



This outline drawing is provided for general reference only is not intend for design or installation. See installation manual and obtain outline drawing number 500-3295 for more information (available from your Distributor/Dealer).

Engine Detail

Model: Isuzu
Design: 4-cycle, liquid-cooled diesel engine
Cylinders: 3, inline vertical
Bore: 3.27 in (83.1 mm)
Stroke: 3.62 in (92 mm)
Displacement: 91.0 in³ (1496 cm³)
Compression ratio: 22:1

Typical fuel consumption

No. 2 diesel fuel, Gal/hr (L/hr)

	No load	Half load	Full load
10.0 HDCAC	0.11 (0.4)	0.62 (2.34)	1.10 (4.16)

Lube oil capacity: 6.7 qt (6.3 L)
Cooling system capacity: 6.1 qt (5.8 L)
Power (max): at 1800 r/min: 23.1 hp, SAE net intermittent
Starting system: Remote, 12 V
Fuel injection pump: Zexel, licensed Bosch PFR
Combustion chamber: IDI

Alternator Detail

Design: Onan, brush type, drip-proof construction
Insulation system: Class F per NEMA MGI-1.65 and BS 2757

Exciter system: Electronic voltage regulator
Bearings: Double sealed prelubricated ball bearing
Cooling: Direct drive centrifugal blower

GenSet Detail

	No load - full load	Constant load
Voltage regulation:	±1%	±1%
Frequency regulation:	±0.1%	±0.5%

Control

- Microprocessor control
- Integrated generator and engine control
- User and service personnel accessible diagnostics
- Fused DC circuits
- Overvoltage safety
- Low oil pressure safety
- Overspeed safety
- Overload safety
- Automatic times glow plugs
- One-touch stop

Warranty Policy

The ONAN limited warranty covers virtually everything except routine maintenance for the first two years you own your generator set, or the first 2,000 hours of operation, whichever comes first. In addition, it includes a free 90-day adjustment policy, which provides that Onan will make minor adjustments to your new genset during the first three months you own it - free of charge!

For complete Onan limited warranty details see your certified Onan Distributor/Dealer.

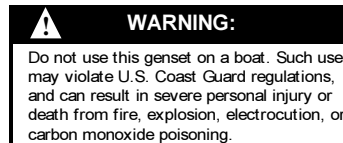
After Sale Support

EASY TO LOCATE CERTIFIED ONAN SERVICE AND PARTS DEALERS - Onan has the largest and best-trained worldwide certified Distributor/Dealer network in the industry, offering on-time parts and service, and installation assistance. Cummins Onan Distributor/Dealers stock and sell commonly used Onan GenSet maintenance parts, accessories and products, plus operator manuals and literature on current Onan GenSets. They can help you select and install the right genset or accessories on older models, or provide answers to questions on proper operation and maintenance procedures.

MANUALS - Installation and operators manuals are shipped with the genset. To obtain additional copies or other manuals for this model, see your Cummins Onan Distributor/Dealer and request the following part numbers: Operators Manual (981-0152B), Parts Manual (981-0259B), Service Manual (981-0526), and Installation Manual (981-0615B).

Standards and Testing

Tested at extremes of temperature -20° F to 120° F for starting and operation.
Tested with commercial loads.
Tested in high humidity conditions.
Tested in salt spray conditions.
Tested in heavy air borne dust conditions.
Field Test Program.
This product meets U.S. EPA Tier II.
This generator set was designed and manufactured in facilities certified to ISO 9001.



Contact your Distributor/Dealer for more information:

To easily locate the nearest Onan Distributor/Dealer, or for more information, contact Onan at 1-800-888-ONAN or 763-574-5000; 1400 73rd Avenue N.E., Minneapolis, MN 55432 U.S.A.; fax 763-574-5298; www.onan.com.



Onan is a subsidiary of Cummins Engine Company. ©2000 Onan Corporation. Onan is a registered trademark of Onan Corporation. Cummins is a registered trademark of Cummins Engine Company.

WARNING: Backfeed to utility systems can cause electrocution or property damage. Do not connect to building electrical except through approved device and after building main breaker is opened.